

YEARS OF SERVICE IN TOUGH ENVIRONMENTS

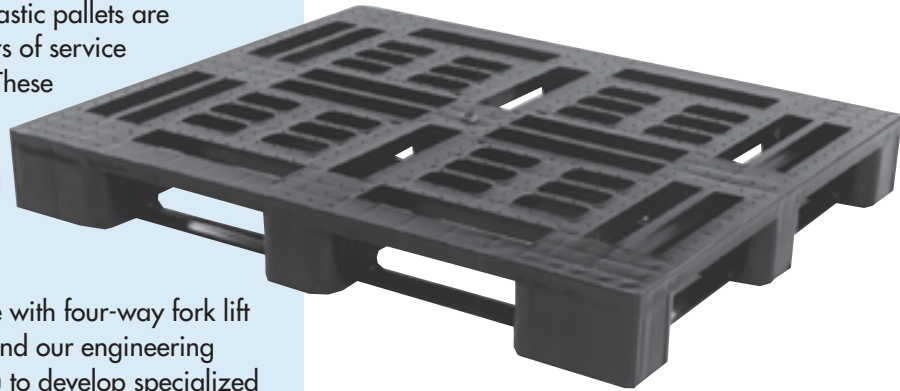
- Our unique one-piece plastic pallets are designed to provide years of service in tough environments. These high quality pallets are rackable, lightweight, repair-free and designed to meet ISO and ASTM pallet standards.
- Many sizes are available with four-way fork lift entry or two-way entry and our engineering group can work with you to develop specialized products based on your unique needs.
- Our pallets are manufactured from recycled materials, and are fully recyclable at the end of their useful lives.

BENEFITS

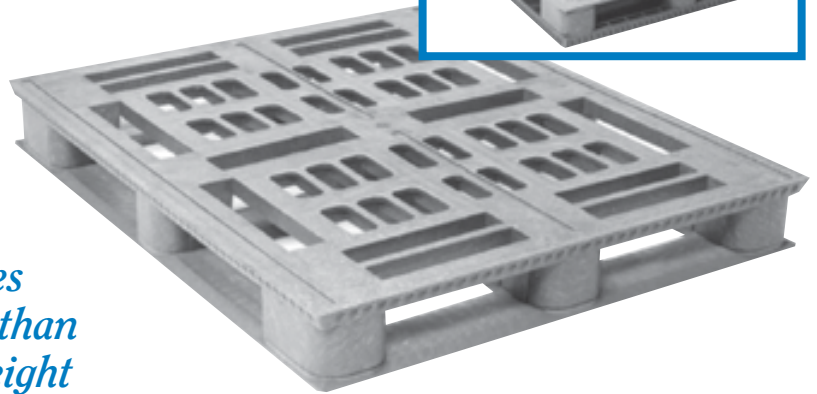
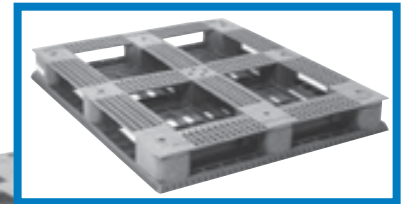
- Price / Quantity
- Made from 100% post-consumer and post-industrial plastic
- 100% recyclable
- Washable / Sanitary
- Impervious to weather
- Reduced product damage
- Monobloc
- Water, oil and chemical resistant
- Safe for workers
- No steel reinforcement
- Consistent weight and size
- Helps to achieve ISO 14001

*Lasts
10 times
longer than
lightweight
wood!*

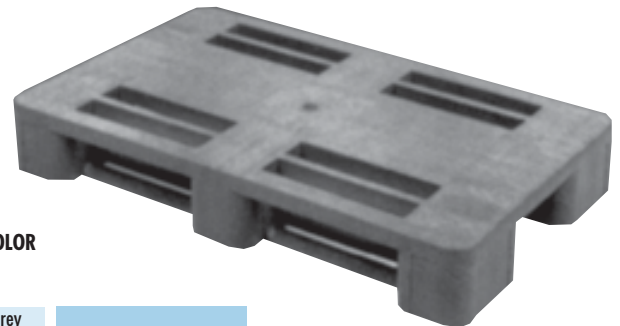
48 x 40 Multiple Use Pallets



48 x 40 Picture Frame Pallet



24 x 40 Display Pallet



MODEL	MEASUREMENTS L x W x H "	WEIGHT (lbs.)	LOAD CAP. (lbs.)			FORK ENTRY	COLOR
			Rackable	Dynamic	Static		
4840S	48 x 40 x 6	55	1000	4500	20 000	4 way	grey
4840SX	48 x 40 x 6	60	1500	5000	30 000	4 way	grey
4840RX	48 x 40 x 6	60	1500	5000	30 000	4 way	grey
4840PF	48 x 40 x 5.5	60	1500	5000	30 000	4 way	grey
4840PF-L	48 x 40 x 48.5	40.5	1500	5000	30 000	4 way	grey
4845R	48 x 45 x 6	57	1000	4500	20 000	4 way	grey
2440R	40 x 24 x 6	33	2000	3500	20 000	2 way	grey

LEGEND

- R = Rounded blocks
- S = Square blocks
- X = Modified design
- L = Lip
- PF = Picture frame

OPTIONS: • Customer Identification • Anti-slip
• Custom color available on minimum order quantities • Other options available upon request

These load capacities may vary depending on working conditions. All measurements are within 1/2" tolerance